



QU  
IVER  
ELFAST

E NO  
OTHER



INTERNATIONAL





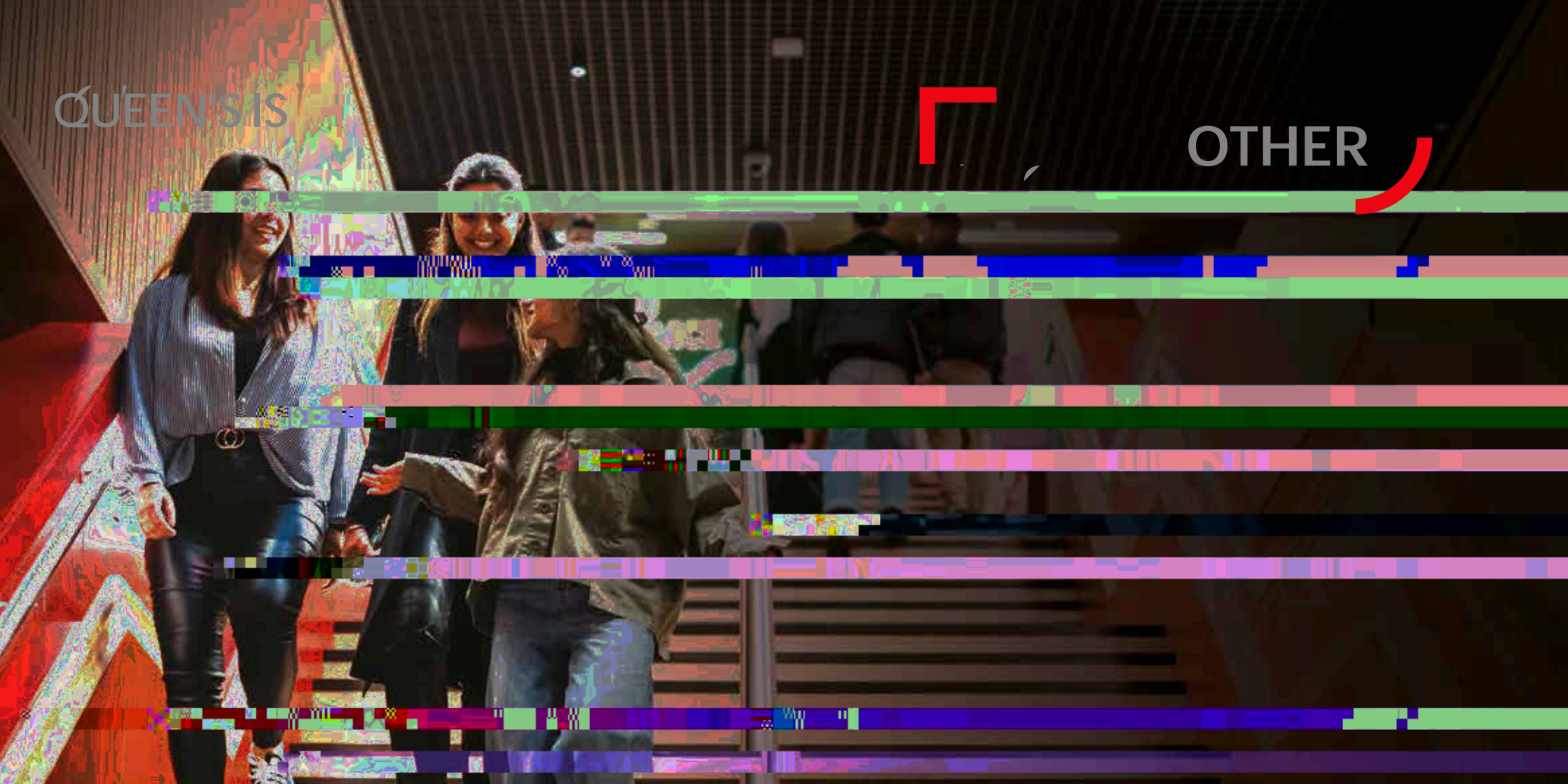
BETTER WORLD

Professor Sir Ian Greer

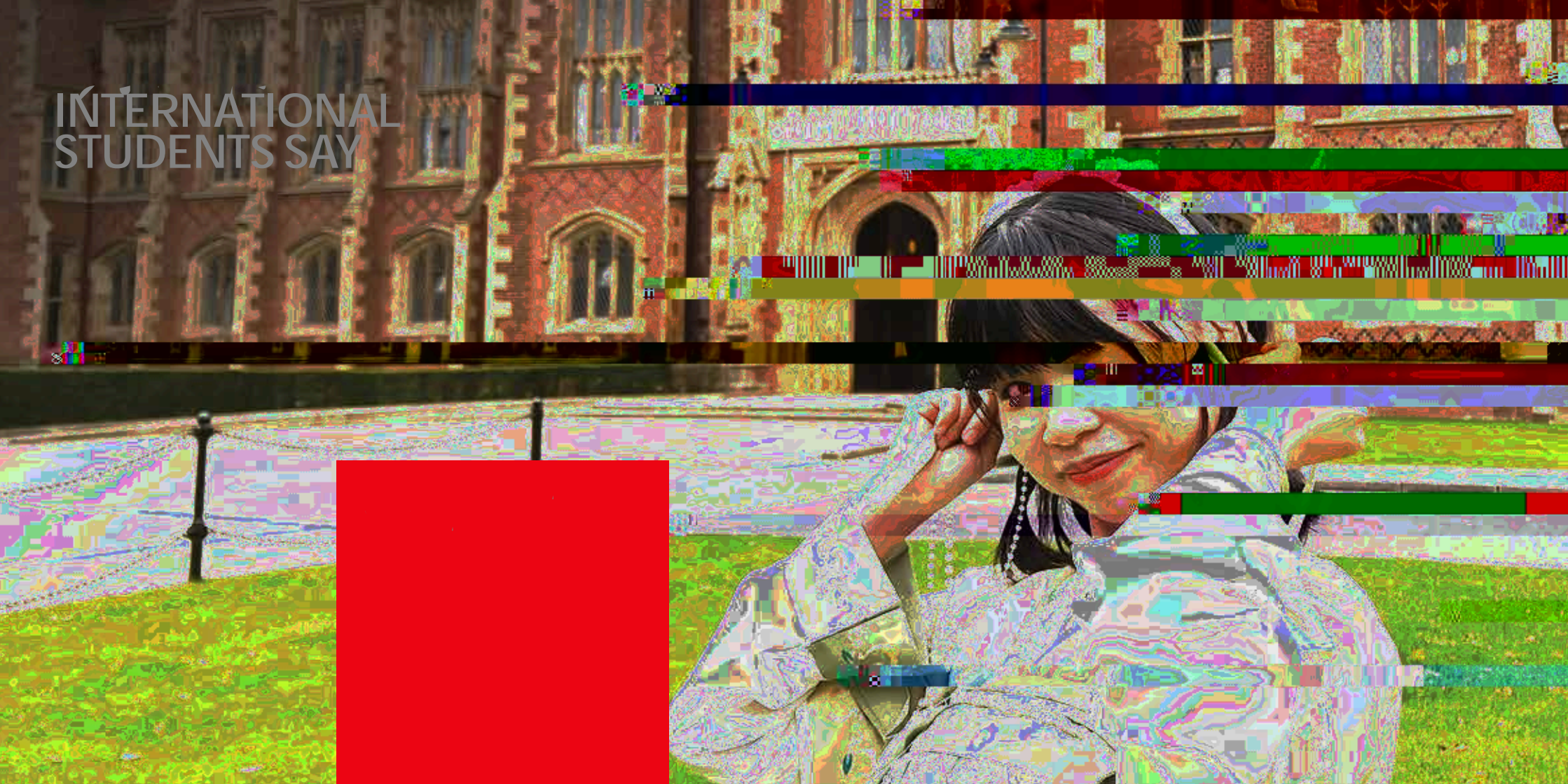


QUEEN'S IS

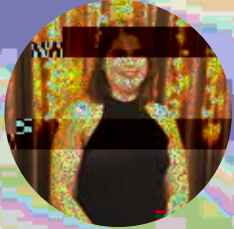
OTHER



# INTERNATIONAL STUDENTS SAY



# INTERNATIONAL STUDENTS SAY



Bianca Andreea Iliescu



Muhammad Hussain Abdul Rahman

Mac McCluskey



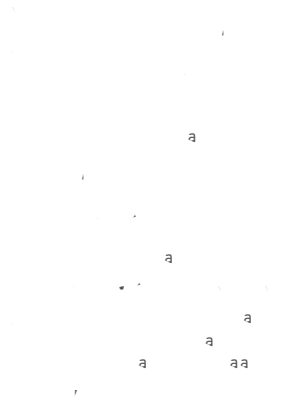






# CULTURE ALL OF OUR OWN

## A CITY OF CULTURE



## GETTING AROUND



## BEYOND THE CITY

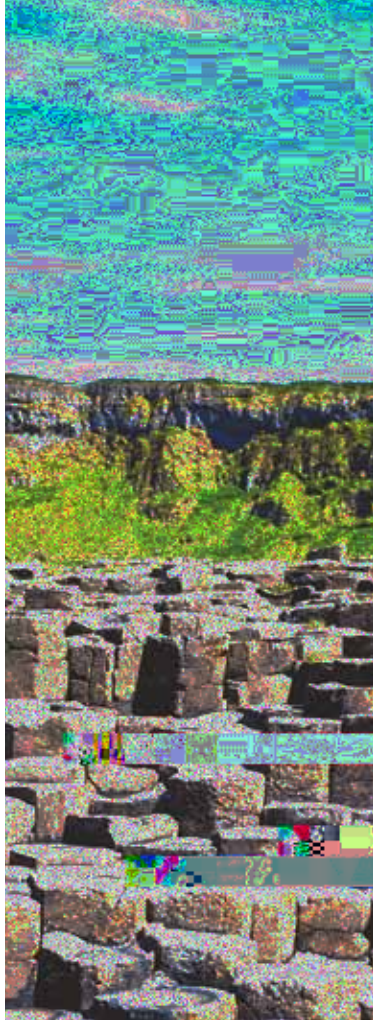


Belfast is in the safest region in the UK

(KGI, 2021/22)



# NORTHERN IRELAND'S LEGENDARY BEAUTY



a

a

a

a

a

.



Meet students from  
over 90 countries.

# ONE ELMWOOD





# FUTURE CAREER

Employability is an unmissable part of the student experience at Queen's. Our expert Careers team are committed to ensuring you have access to valuable experiences to develop future-ready skills. We work to expose you to the



# WORLD-CLASS



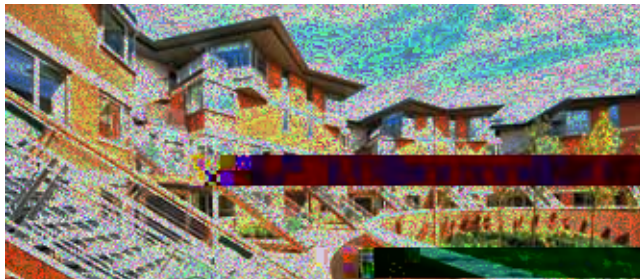
The Graduate School

## OUR EVER-EVOLVING CAMPUS

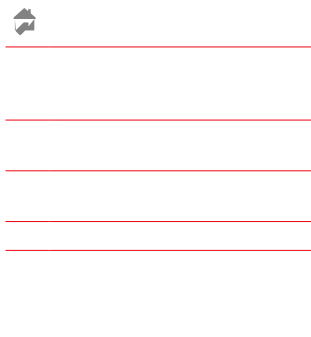


### YOUR OPTIONS, AT A GLANCE

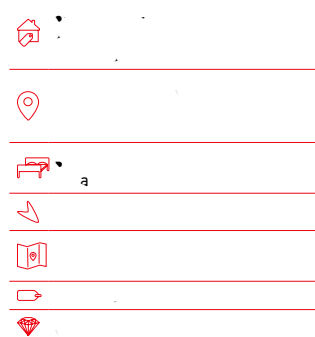
- Single or mixed gender accommodation
- Accommodation for couples and families
- En suite or shared bathrooms
- Studio, one- to six-bedroom apartments
- Standard and en suite room options
- Lifestyle options of no alcohol, single gender, quiet living



#### ELMS BT1 AND BT2



#### QUEEN'S HOUSES



NO HIDDEN CHARGES

a

a

a a

a



# FEES AND FUNDING

## 2025/26 INTERNATIONAL FEES

International students from the USA, Canada, Mexico, the Caribbean, Central and South America, Africa, the Middle East, India, Pakistan, Bangladesh, Nepal, Sri Lanka, Malaysia, Singapore, Hong Kong, Taiwan, South Korea, Japan, China, and other countries outside the UK, Europe, and the Republic of Ireland will be charged international fees. The fee schedule is based on the 2024/25 academic year. For the most up-to-date information, please visit our website.

| Course and Level of study | 2025/26 (€ GBP) | 2025/26 (\$ US Dollars)* |
|---------------------------|-----------------|--------------------------|
| Undergraduate (BSc)       | £10,000         | \$15,000                 |
| Undergraduate (BA)        | £10,000         | \$15,000                 |
| Postgraduate (MSc)        | £12,000         | \$18,000                 |
| Postgraduate (MPhil/PhD)  | £15,000         | \$22,500                 |

\*As of 2024, \$ = 0.80

# SCHOLARSHIPS

[go.qub.ac.uk/ScholarshipsInternational](https://www.qub.ac.uk/ScholarshipsInternational)

## International Office Scholarships

£2,000 - £5,000

## Queen's Family Scholarship

20% discount on year 1 tuition fee,

## Vice-Chancellor's International Attainment Scholarship

50% Reduction in Tuition Fees

# BELFAST

INTO Queen's University Belfast provides a range of academic and English language courses to help prepare International Students for future study at Queen's. At the INTO Queen's Centre you'll find modern facilities, an inspiring learning environment and staff dedicated to the highest standards of teaching and personalised student support.

## ACADEMIC ENGLISH

## IN-SESSIONAL ENGLISH





# DIRECTORY

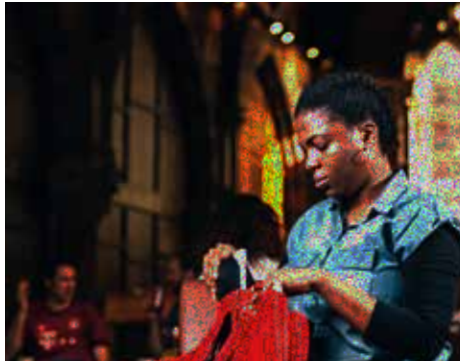
go.qub.ac.uk/YourCountryRegion

qub.ac.uk/courses

This undergraduate guide is prepared well in advance of the 2025 academic year to which it relates. Therefore, the entry requirements stated here are for guidance only.

qub.ac.uk/courses

qub.ac.uk/courses



|  |  |  |  |  |  |
|--|--|--|--|--|--|
|  |  |  |  |  |  |
|  |  |  |  |  |  |
|  |  |  |  |  |  |
|  |  |  |  |  |  |
|  |  |  |  |  |  |
|  |  |  |  |  |  |
|  |  |  |  |  |  |
|  |  |  |  |  |  |
|  |  |  |  |  |  |
|  |  |  |  |  |  |
|  |  |  |  |  |  |
|  |  |  |  |  |  |
|  |  |  |  |  |  |
|  |  |  |  |  |  |
|  |  |  |  |  |  |
|  |  |  |  |  |  |
|  |  |  |  |  |  |
|  |  |  |  |  |  |
|  |  |  |  |  |  |
|  |  |  |  |  |  |
|  |  |  |  |  |  |
|  |  |  |  |  |  |

| SUBJECT 1 | COURSE | YRS | PLACEMENT | IELTS | International Entrance Requirements 2025 |
|-----------|--------|-----|-----------|-------|--|
|           |        |     |           |       |  |
|           |        |     |           |       |  |
|           |        |     |           |       |  |
|           |        |     |           |       |  |
|           |        |     |           |       |  |
|           |        |     |           |       |  |
|           |        |     |           |       |  |
|           |        |     |           |       |  |
|           |        |     |           |       |  |

International Entrance Requirements 2025







| SUBJECT 1 | COURSE | YRS | PLACEMENT | IELTS | International Entrance Requirements 2025 |
|-----------|--------|-----|-----------|-------|--|
|           |        |     |           |       |  |
|           |        |     |           |       |  |
|           |        |     |           |       |  |
|           |        |     |           |       |  |
|           |        |     |           |       |  |
|           |        |     |           |       |  |
|           |        |     |           |       |  |
|           |        |     |           |       |  |
|           |        |     |           |       |  |
|           |        |     |           |       |  |
|           |        |     |           |       |  |
|           |        |     |           |       |  |

| SUBJECT 1 | COURSE | YRS | PLACEMENT | IELTS | International Entrance Requirements 2025 |
|-----------|--------|-----|-----------|-------|--|
|           |        |     |           |       |  |
|           |        |     |           |       |  |
|           |        |     |           |       |  |
|           |        |     |           |       |  |
|           |        |     |           |       |  |
|           |        |     |           |       |  |
|           |        |     |           |       |  |
|           |        |     |           |       |  |
|           |        |     |           |       |  |
|           |        |     |           |       |  |
|           |        |     |           |       |  |





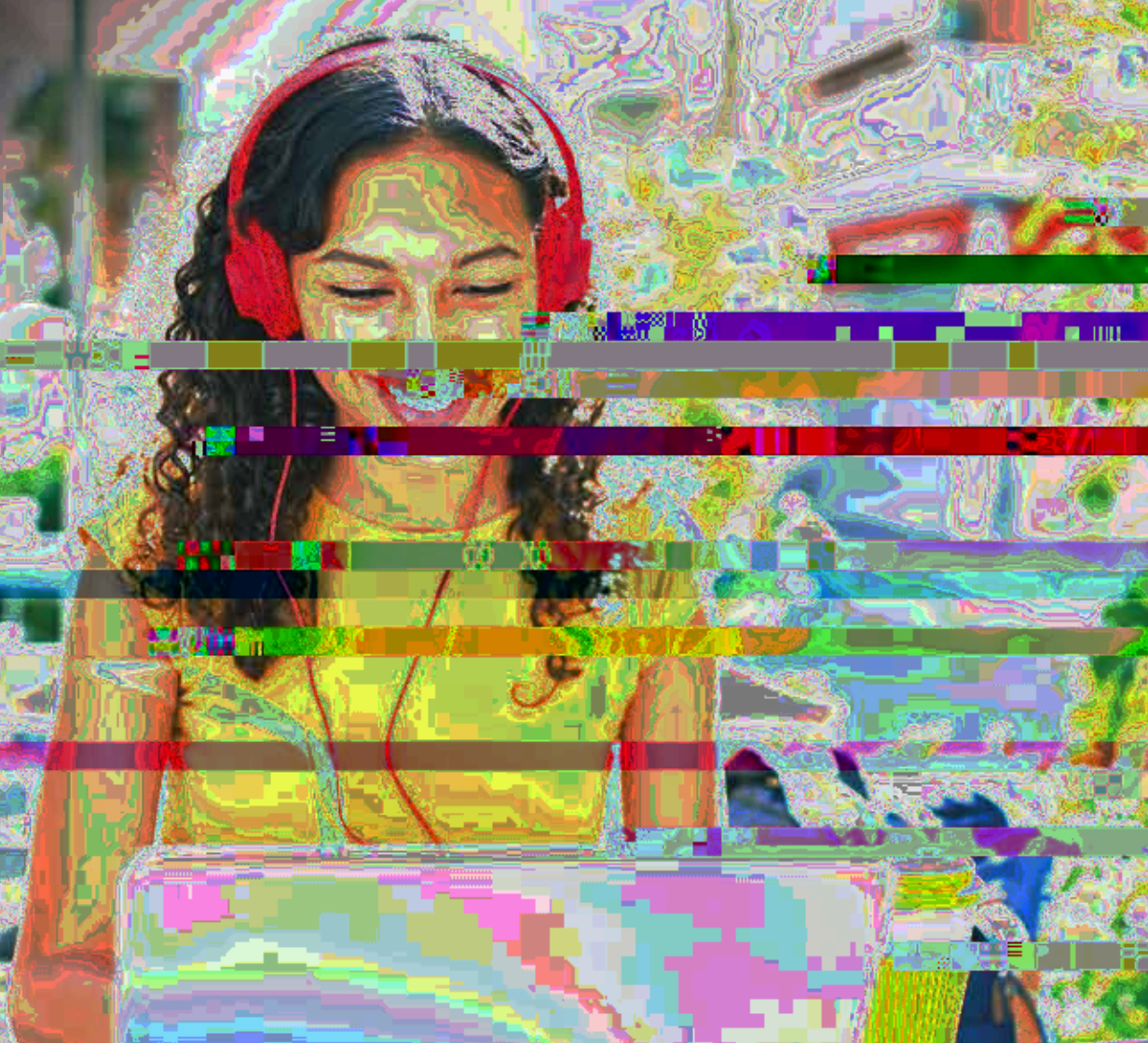
qub.ac.uk/courses/

qub.ac.uk/courses/

go.qub.ac.uk/EnglishLanguageReqs

1  
2  
3  
4  
5  
6  
7  
8  
9  
10  
11  
12  
13  
14  
15  
16  
17  
18  
19  
20  
21  
22  
23  
24  
25  
26  
27  
28  
29  
30  
31  
32  
33  
34  
35  
36  
37  
38  
39  
40  
41  
42  
43  
44  
45  
46  
47  
48  
49  
50  
51  
52  
53  
54  
55  
56  
57  
58  
59  
60  
61  
62  
63  
64  
65  
66  
67  
68  
69  
70  
71  
72  
73  
74  
75  
76  
77  
78  
79  
80  
81  
82  
83  
84  
85  
86  
87  
88  
89  
90  
91  
92  
93  
94  
95  
96  
97  
98  
99  
100

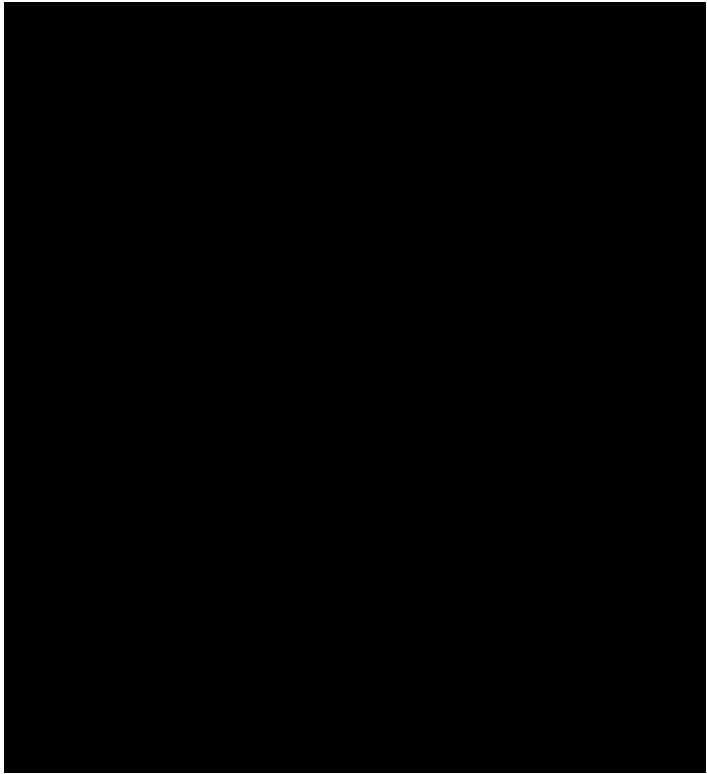
WHEN  
TO  
APPLY



HOW TO APPLY









### International Office

📍 [international@qub.ac.uk](mailto:international@qub.ac.uk)

### North America

📍 [northamerica@qub.ac.uk](mailto:northamerica@qub.ac.uk)

### China

📍 [china@qub.ac.uk](mailto:china@qub.ac.uk)

### South Asia

📍 [southasia@qub.ac.uk](mailto:southasia@qub.ac.uk)

### Middle East and North Africa

📍 [mena@qub.ac.uk](mailto:mena@qub.ac.uk)

### South East Asia

📍 [seasia@qub.ac.uk](mailto:seasia@qub.ac.uk)

### Pakistan

📍 [pakistan@qub.ac.uk](mailto:pakistan@qub.ac.uk)

### Latin America

📍 [latinamerica@qub.ac.uk](mailto:latinamerica@qub.ac.uk)

### Sub-Saharan

📍 [sub-saharan@qub.ac.uk](mailto:sub-saharan@qub.ac.uk)

### USEFUL CONTACTS

#### Undergraduate Admissions Enquiries

📍 [undergraduate@qub.ac.uk](mailto:undergraduate@qub.ac.uk)  
📍 [go.qub.ac.uk/Applying](https://go.qub.ac.uk/Applying)

#### Postgraduate Admissions Enquiries

📍 [postgraduate@qub.ac.uk](mailto:postgraduate@qub.ac.uk)

#### Immigration Support Service

📍 [immigration@qub.ac.uk](mailto:immigration@qub.ac.uk)

#### Student Finance

📍 [studentfinance@qub.ac.uk](mailto:studentfinance@qub.ac.uk)

#### Queen's Accommodation

📍 [accommodation@qub.ac.uk](mailto:accommodation@qub.ac.uk)  
📍 [qub.ac.uk/accommodation/](https://qub.ac.uk/accommodation/)

### DISCLAIMER

📍 [admissions@qub.ac.uk](mailto:admissions@qub.ac.uk)  
📍 [www.qub.ac.uk/Study/Download-a-Prospectus/](https://www.qub.ac.uk/Study/Download-a-Prospectus/)  
(A) 2024

📍 [www.qub.ac.uk/Study/Download-a-Prospectus/](https://www.qub.ac.uk/Study/Download-a-Prospectus/)

📍 [www.qub.ac.uk/courses/](https://www.qub.ac.uk/courses/)

📍 [www.qub.ac.uk/courses/](https://www.qub.ac.uk/courses/)



◀ BACK TO CONTENTS

