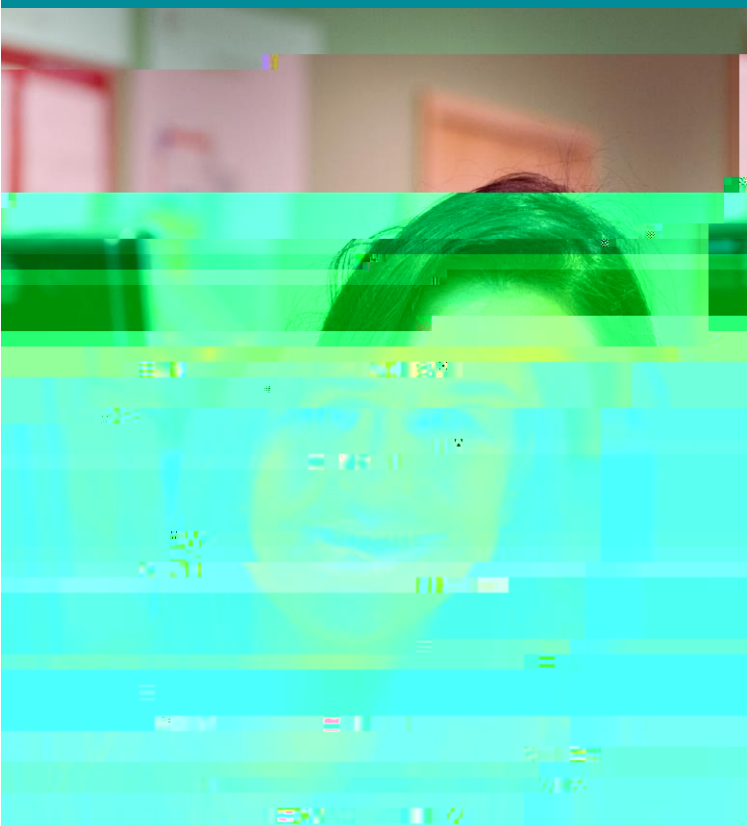




QUEEN'S  
UNIVERSITY



# STUDENT COMPUTING AT QUEEN'S

## ACCEPTABLE USE GUIDE



## Considerate computing

We want our SCAs and study areas to be pleasant working environments for all our students and staff.

You can do your bit by:

- Not eating near the PCs - use drinks with secure tops only
- Logging out when you take a break to allow someone else to use the PC
- Keeping noise to a minimum - use earphones for audio or book a group study room if you need to work as part of a group
- Respecting equipment, using recycling bins and leaving study areas as you would like to find them

## Bring your own device (BYOD)

For instructions on connecting [reW\\*BTQq0.00000835 0 560.04594 reW\\*BT/F](#)



## Version Control